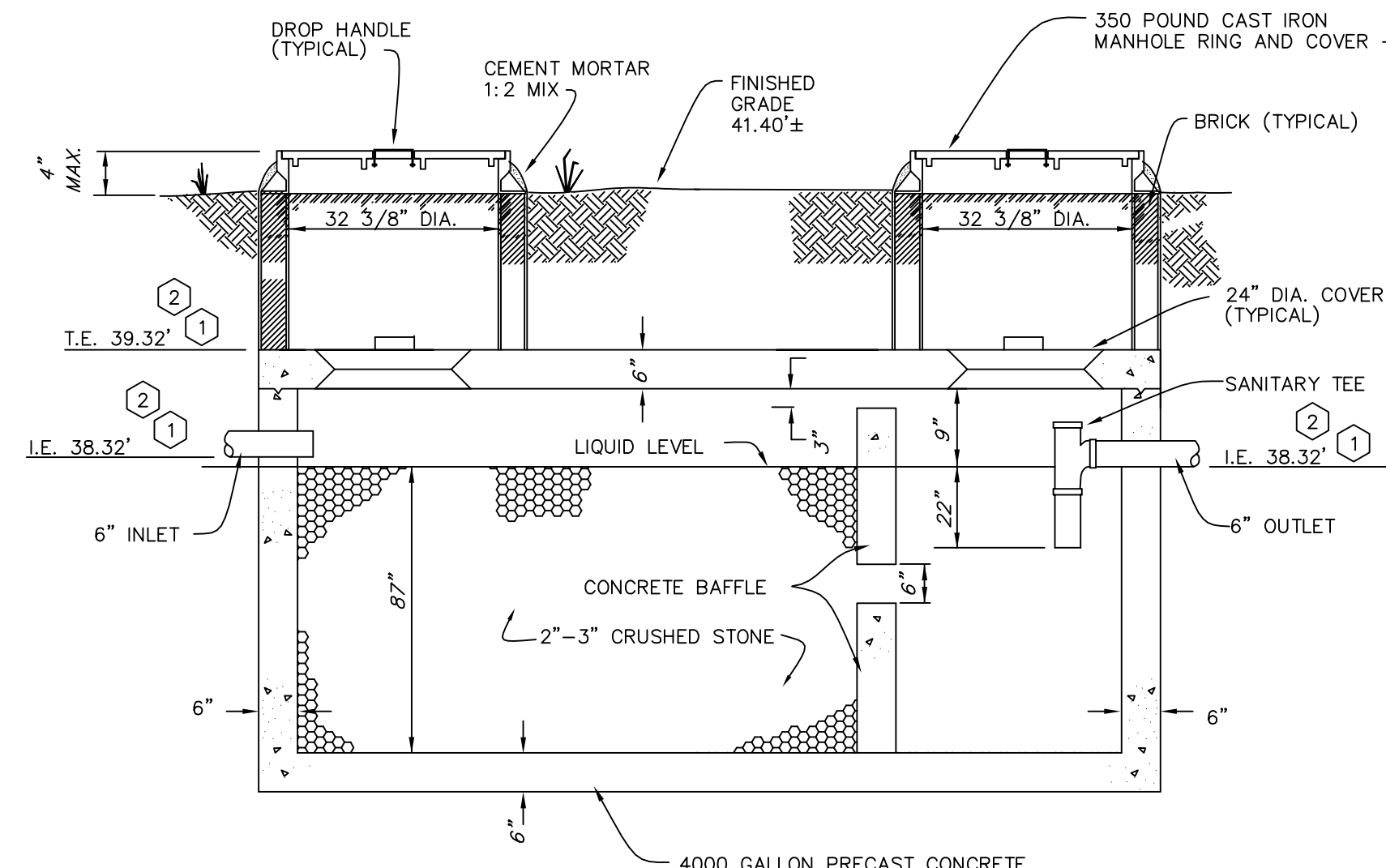
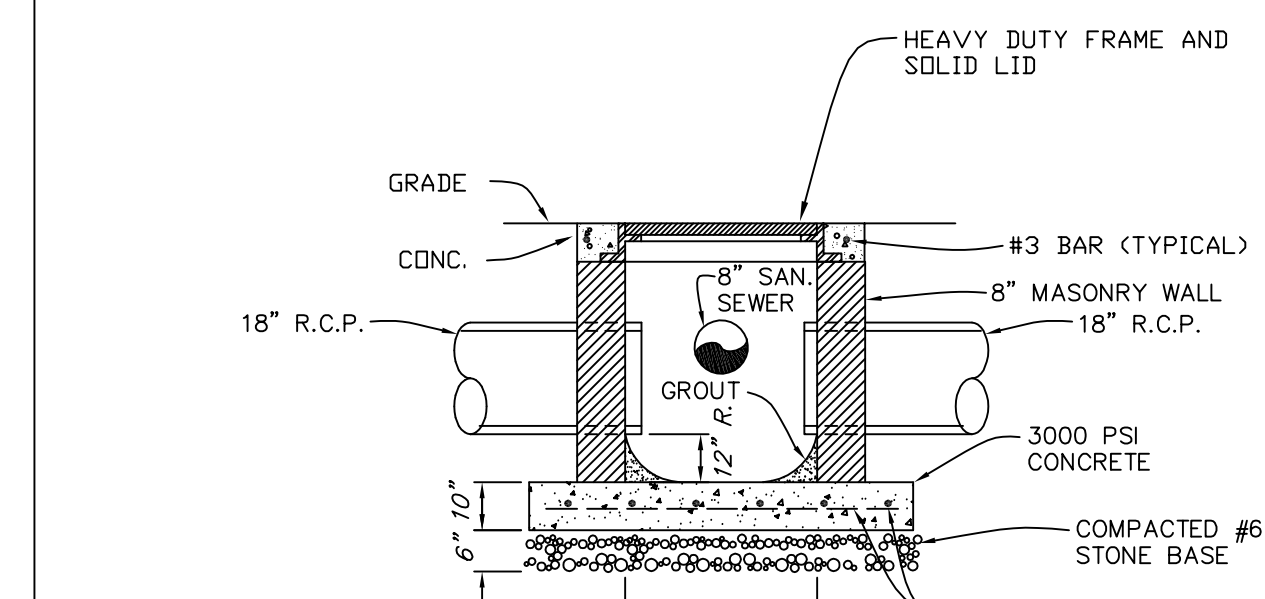


P1
04
WATER METER
DETAIL
NO SCALE



P1
05
PRECAST CONCRETE NEUTRALIZING TANK
DETAIL
NO SCALE



P1
06
INTERFERENCE MANHOLE
DETAIL
NO SCALE

PLUMBING LEGEND				
CW	----	COLD WATER PIPING	⊙	CLEANOUT FLUSH WITH FLOOR/GRADE
HW	----	HOT WATER PIPING	⊖	CLEANOUT BELOW FLOOR
HWR	----	HOT WATER RETURN PIPING	F.F.E.	FINISHED FLOOR ELEVATION
W	----	WASTE PIPING	I.E.	INVERT ELEVATION
AW	----	ACID WASTE PIPING	M.H.	MANHOLE
V	----	VENT PIPING	T.E.	TOP ELEVATION
AV	----	ACID VENT PIPING	V.T.R.	VENT THRU ROOF
—G		GAS PIPING	⌵	GATE VALVE
—V		VACUUM PIPING	⌵	GAS COCK
—DW		DEIONIZED WATER PIPING	⌵	BALL VALVE
—LA		LAB AIR PIPING	⌵	R.C.P.
A	—	AIR PIPING	R.D.	ROOF DRAIN
⊙		CONNECT NEW TO EXISTING	R.D.L.	ROOF DRAIN LEADER
A.C.		AIR CHAMBER	—	WASTE STUB-UP
A.F.F.		ABOVE FINISHED FLOOR	⊙	WASTE STUB-UP, PLUG FOR FUTURE
A.F.G.		ABOVE FINISHED GRADE	C.B.	CATCH BASIN
A.F.C.		ABOVE FINISHED CEILING		
B.F.G.		BELOW FINISHED GRADE		
B.F.F.		BELOW FINISHED FLOOR		
U.N.O.		UNLESS NOTED OTHERWISE		

TOTAL CONNECTED LOAD

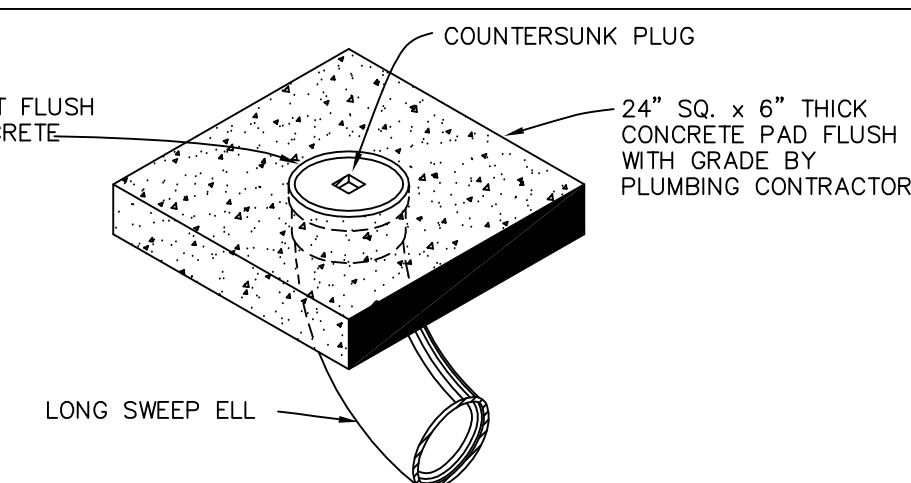
FIXTURE UNITS		
WATER :	1169	(229 GPM)
WASTE :	1185	
GAS : WATER HEATER -	400 MBH	
LAB EQUIPMENT -	1080 MBH	
BOILERS -	13824 MBH	

PLUMBING FIXTURE SCHEDULE

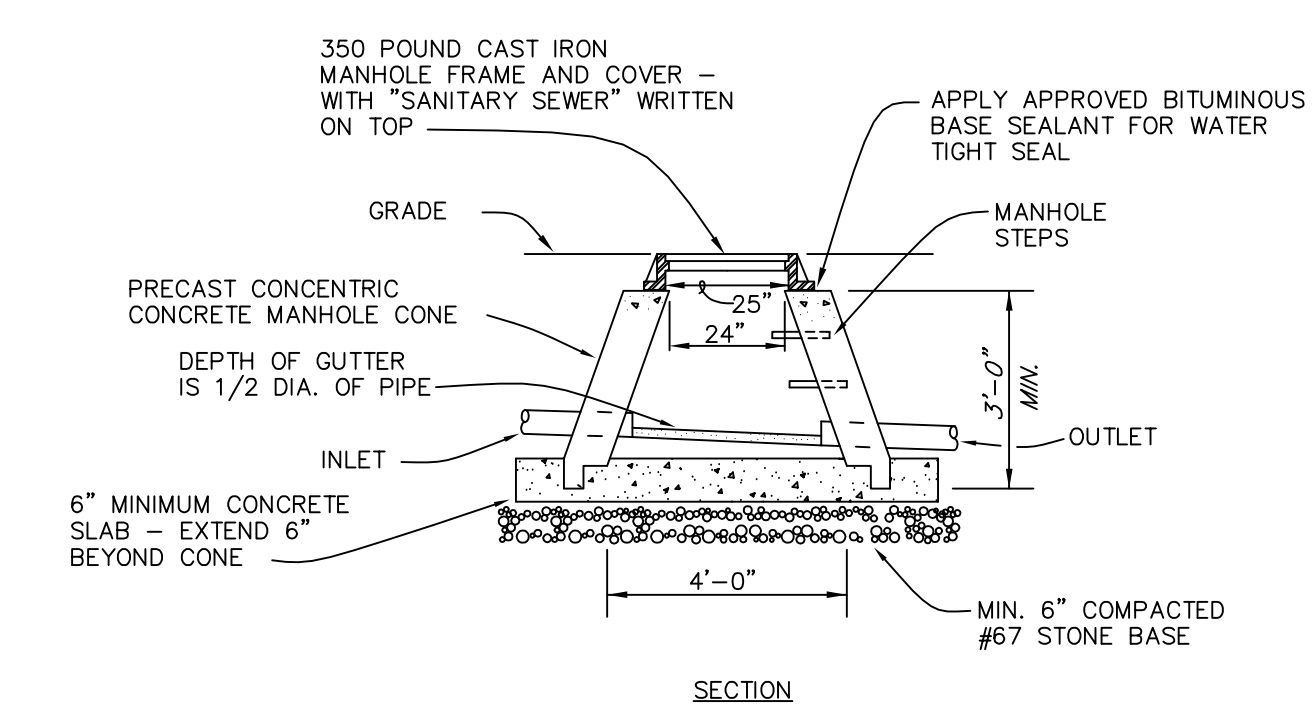
MARK	DESCRIPTION	WASTE	C.W.	H.W.	REMARKS
P-1	WATER CLOSET	4"	1 1/4"	-	FLUSH VALVE 38 1/4" A.F.F.
P-1 H	WATER CLOSET	4"	1 1/4"	-	FLUSH VALVE 26 1/2" A.F.F.
P-2	URINAL	2"	3/4"	-	MOUNT RIM 24" A.F.F.
P-2H	URINAL	2"	3/4"	-	MOUNT RIM 17" A.F.F.
P-3	LAVATORY	1 1/2"	1/2"	1/2"	MOUNT RIM 31" A.F.F.
P-3H	LAVATORY	1 1/2"	1/2"	1/2"	MOUNT BOTTOM OF APRON 30" A.F.F.
P-4	COUNTERTOP LAVATORY	1 1/2"	1/2"	1/2"	
P-5	COUNTERTOP SINK	1 1/2"	1/2"	1/2"	
P-6	MOP RECEPTOR	3"	3/4"	3/4"	MOUNT FAUCETS 36" A.F.F.
P-7	FLOOR DRAIN	3"	-	-	
P-8	FLOOR DRAIN	3"	-	-	
P-9	FLOOR SINK	4"	-	-	
P-10	HOSE BIBB	-	0"	-	MOUNT 18" A.F.F.
P-11	HOSE BIBB	-	1/2"	-	MOUNT 18" A.F.F.
P-12	ANTI-FREEZE HYDRANT	-	3/4"	-	MOUNT 24" A.F.G.
P-13	ELECTRIC WATER COOLER	1 1/4"	1/2"	-	MOUNT RIM 34" A.F.F.
P-14	SHOWER & DRAIN	3"	0"	0"	MOUNT SHOWER HEAD 72" A.F.F.
P-15	SERVICE SINK	3"	3/4"	3/4"	

NOTES

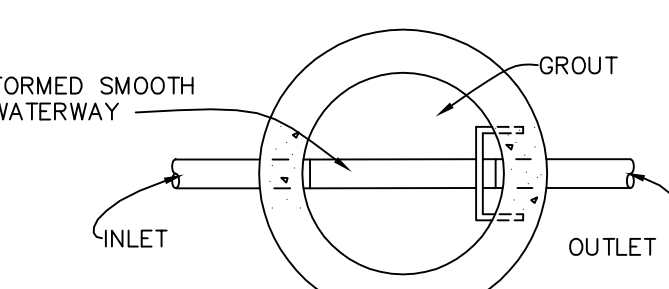
1. ROOF DRAIN LEADERS ARE FIGURED ON 1/8" SLOPE IN 12".
1. FLUSH VALVE OPERATING HANDLE FOR FIXTURE P-1H SHALL BE OPERABLE FROM WIDE SIDE OF SHALL.



P1
02
EXTERIOR CLEANOUT
DETAIL
NO SCALE



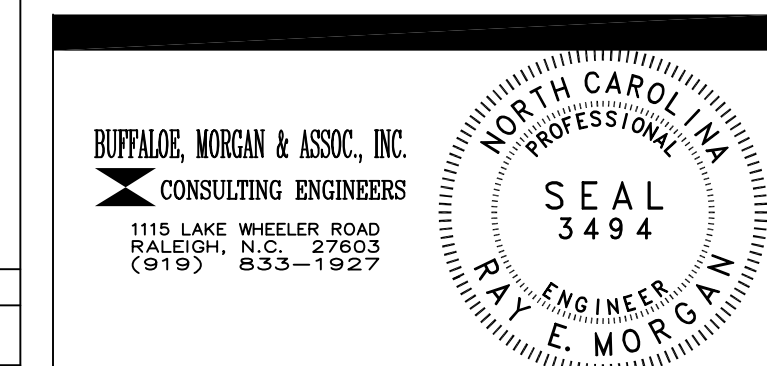
SECTION



SECTIONAL PLAN

P1
03
MANHOLE
DETAIL
NO SCALE

P1
01
SCIENCE BUILDING
SITE PLAN
SCALE: 1" = 40'-0"



DRAWING REVISIONS:		
NO.	DATE:	REMARKS:
1	23 FEB.95	REVISE SANITARY SEWER
2	15 MAR.95	REVISE SANITARY SEWER INVERTS

DATE:	5/16/94
PROJECT#:	9305
DESIGNED BY:	CRR
DRAWN BY:	RDH II
CHECKED BY:	CRR
CHECKED BY:	REM

SHEET NO.:	P1
OF	7